

# Today's Kirtland Temple



# We continue to strive for community involvement

**Our old Visitor Center forced us to think beyond the property lines. It inspired staff to reach out to the Kirtland community as:**

- Active members of the Kirtland Kiwanis Board
- Past advisors of the local high school Key Club and Builders Club
- Offsite presentations at local assisted living facilities and schools
- Distance learning program with local high school and Cleveland Museum of Art



Old Kirtland Temple Visitor Center



## Connecting to other Kirtland Landmarks

- Staff member sits on the Kirtland cemetery board
- Partnership with the Lake County Historical Society in cemetery and church tours
- Packaged tours with Holden Arboretum, Lake Farm Park, and Historic Kirtland “Church, State & Plate”
- Interpretive assistance at Lake County parks





# Role of Kirtland Temple in the Kirtland Community

Canvas for local high school art teacher

• Temple gardens and grounds for science teachers “temple bugs”

• Partnership with career development program at Kirtland High School

• Community service hours with high school seniors

• Annual Kirtland Library exhibit

• High School choir participates in community Thanksgiving service each November

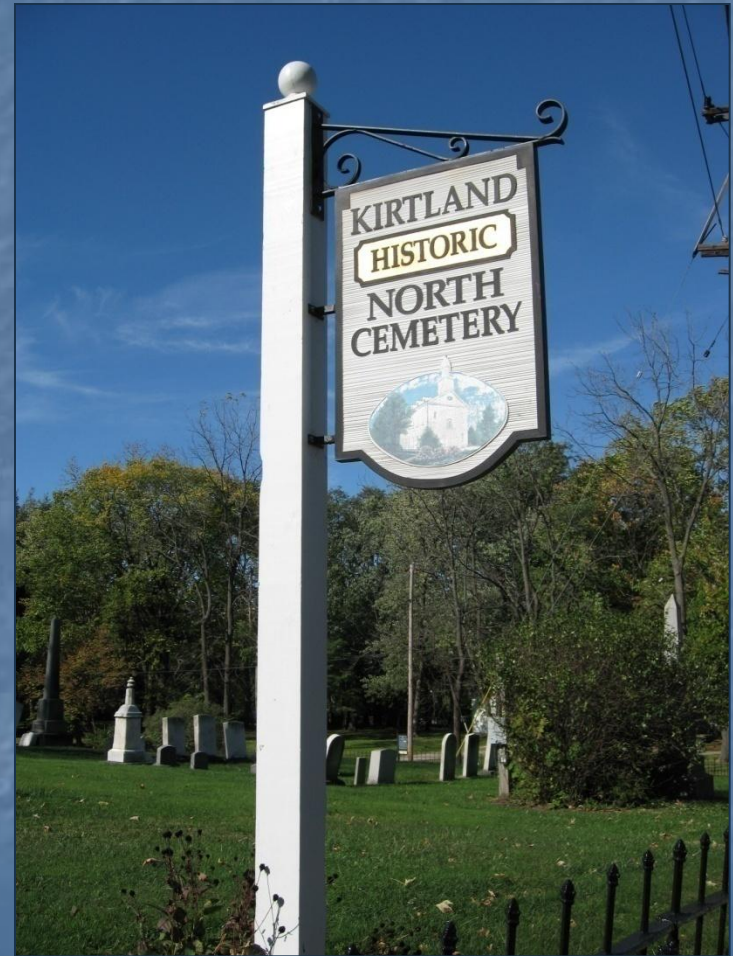




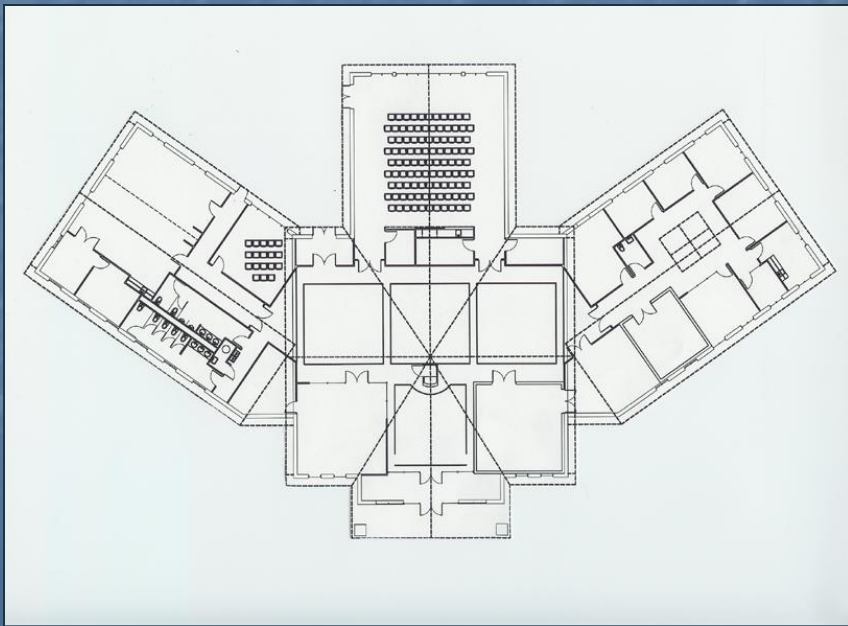
Kirtland Religious and Civic Leaders Association  
Annual Community Thanksgiving Service



# Temple as icon for Kirtland history



# New Visitor Center





# Role of Kirtland Community in the New Visitor Center

- Committee included Kirtland's religious and civic leaders
- Original purpose
  - Contribute to the physical design and layout of the museum
  - Contribute to the theme and content of the exhibits
- Committee identity and purpose evolved
  - Contributed to our interpretive plan (temple tours)
  - Assisted in temple grounds and garden layout
  - Exterior signage and lighting
  - Museum store products
  - Theater exhibits and layout
  - Classroom as community space



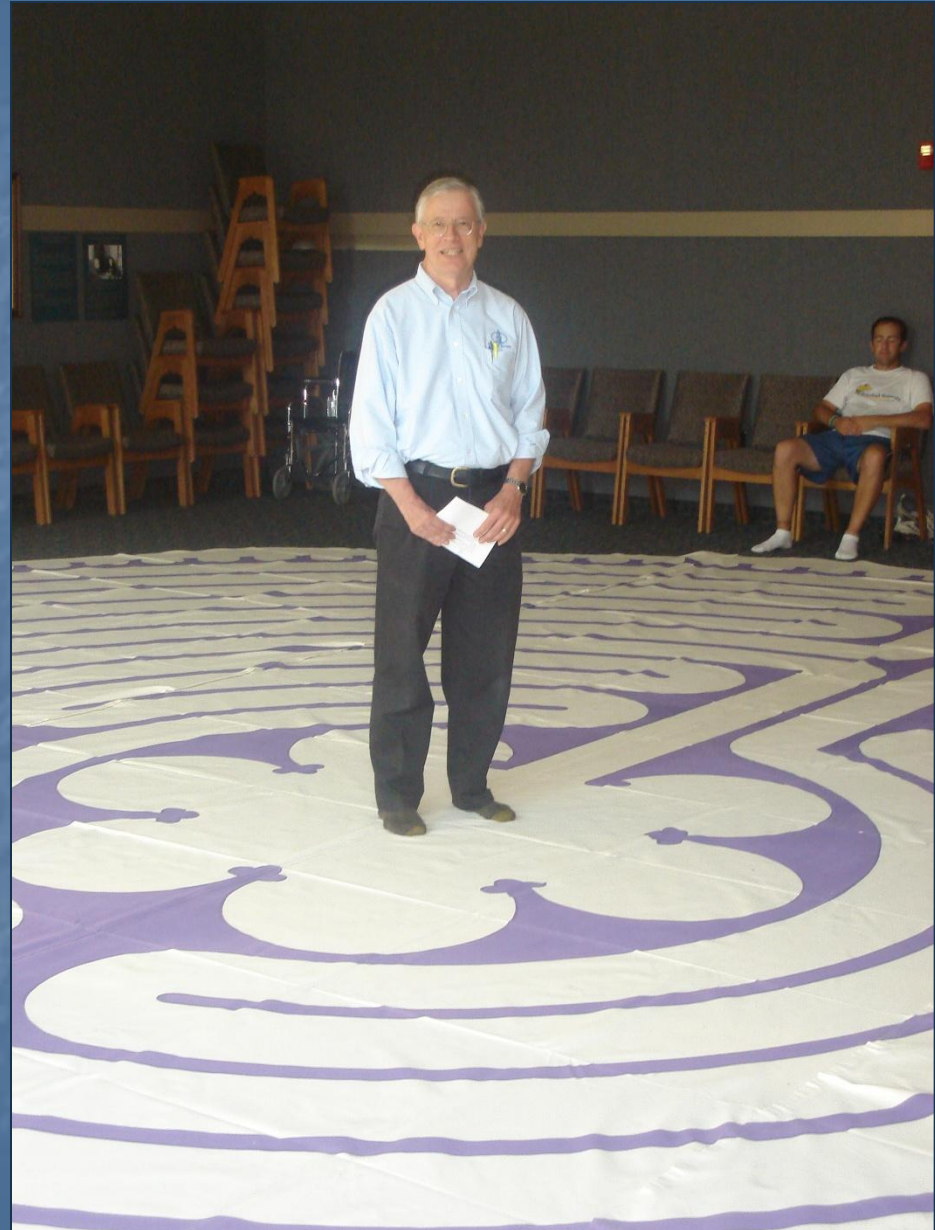
# Community Relations in New Center

- Kirtland Mayor at dedication and ribbon cutting
- Kirtland Kiwanis first to dine in the theater
- Kirtland Ministerial Alliance first to convene in classroom
- Venue for board meetings for Lake County Visitors Bureau and Lake County Council of Arts
- Congressman advocating heritage area



## Spiritual Formation and the Community of Christ

- Pilgrimage Experience
- Labyrinth walks and meditation
- Weekend retreats
- Silent meditation
- Healing services





# The visitor center is a place of learning and exploration...



Spiritual Formation Classroom



Research Library

# A place where all are welcome...





# Where we connect our shared past with our present...



Interactive museum exhibits



Theater

# Where we continue to experience and celebrate our Community of Christ heritage...



Cemetery Tours



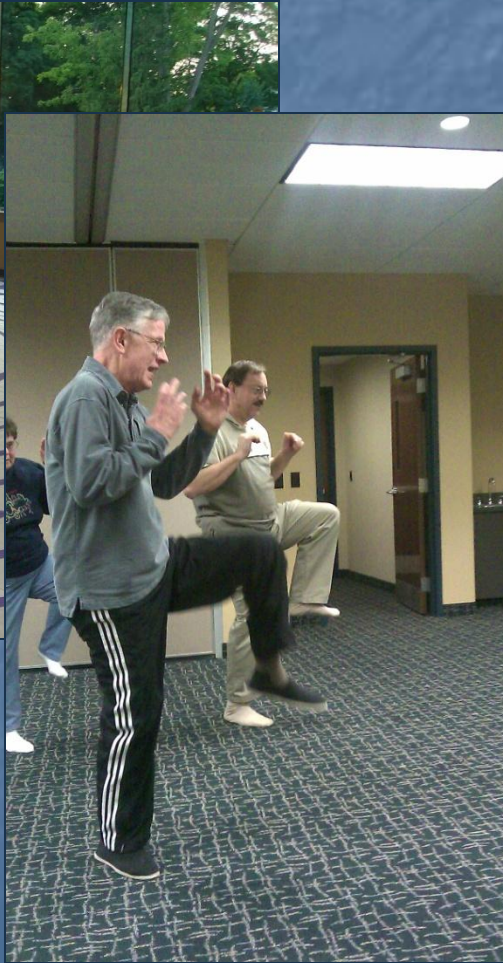
Artifact Exploration







# Learning lessons of spiritual formation and discernment...





# While encountering fellowship and fun times along the way...





# Preserving the Past, Inspiring the Future

